



# Perth & District Anglers Association

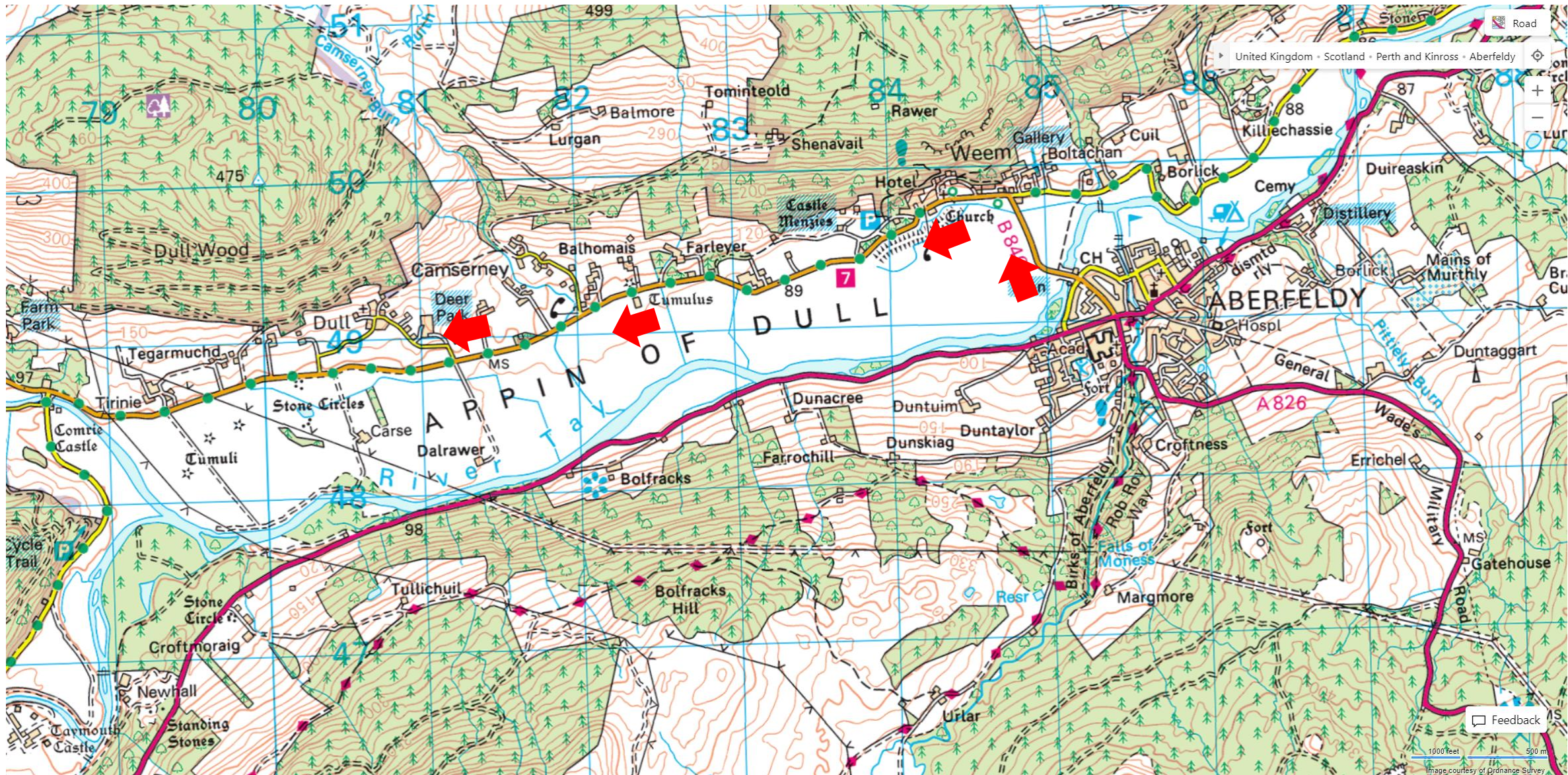
*Scotland's Best Value Salmon Fishing*



## Upper Farleyer











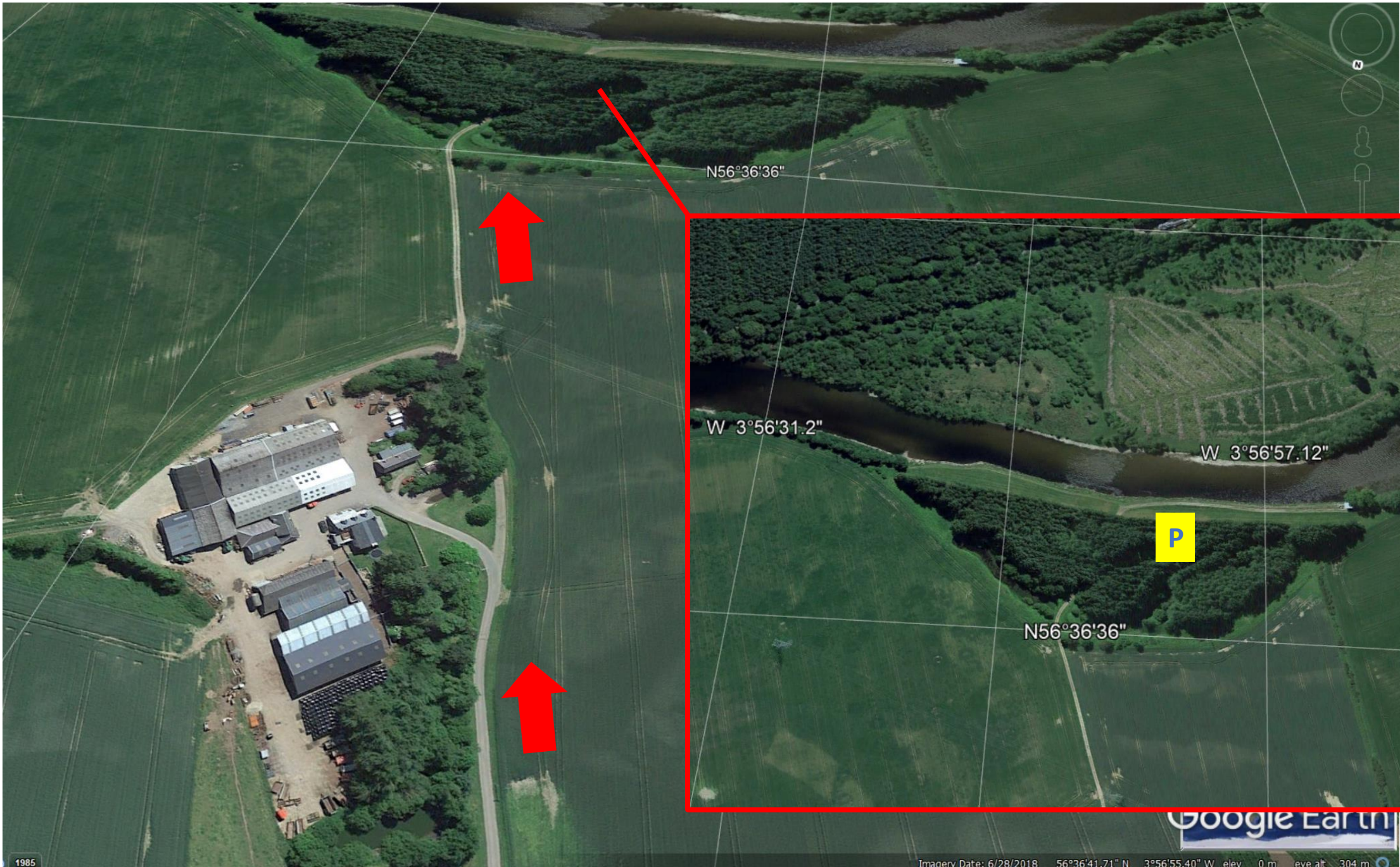












N56°36'36"

W 3°56'31.2"

W 3°56'57.12"

N56°36'36"

P

Google Earth

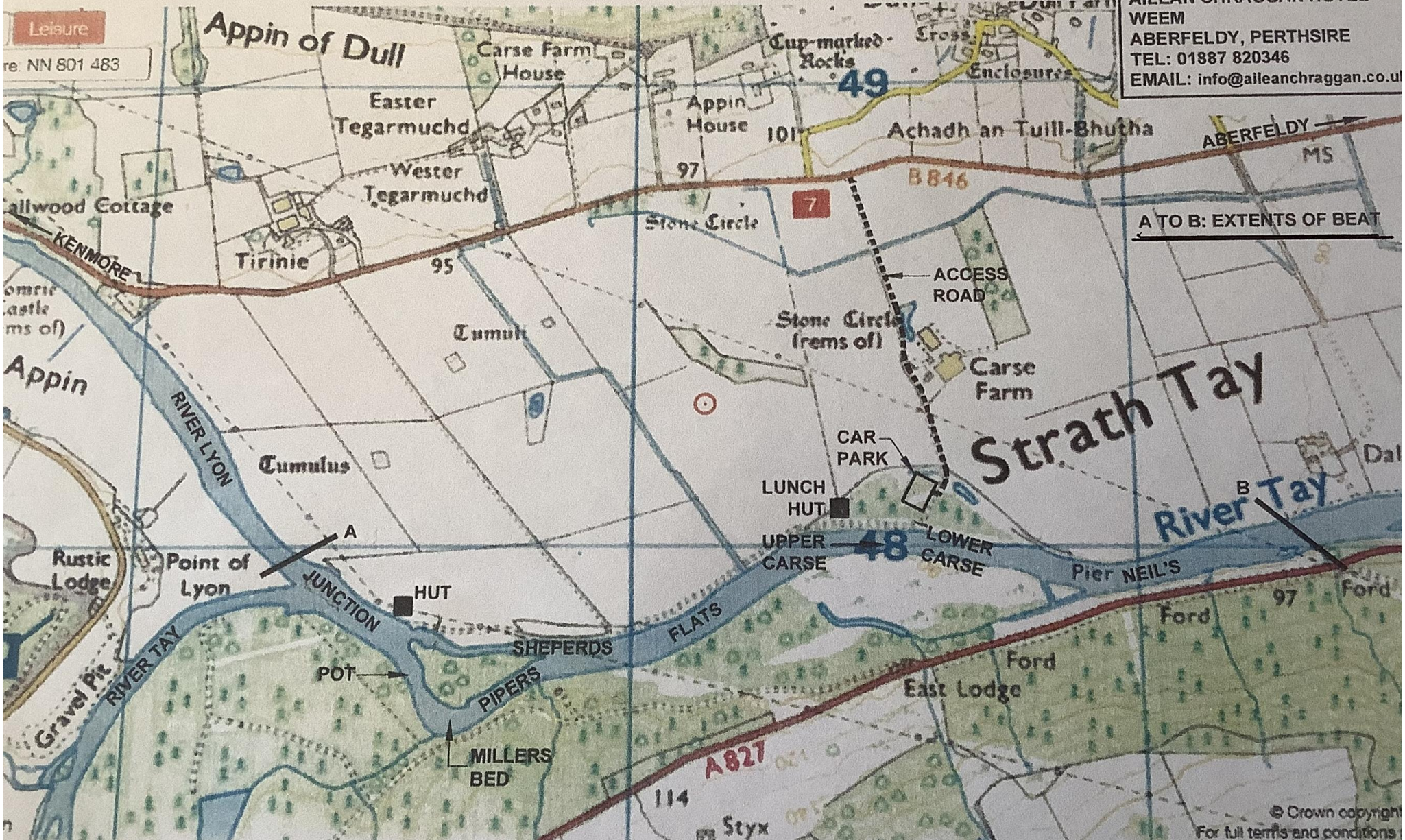
1985

Imagery Date: 6/28/2018 56°36'41.71" N 3°56'55.40" W elev 0 m eye alt 304 m



**FARLEYER FISHERIES  
RIVER TAY**

AILEAN CHRAGGAN HOTEL  
WEEM  
ABERFELDY, PERTHSIRE  
TEL: 01887 820346  
EMAIL: [info@aileanchraggan.co.uk](mailto:info@aileanchraggan.co.uk)



A TO B: EXTENTS OF BEAT



# Complete beat, left bank only, 9am to 5pm





Upper Part of Beat





## Junction Pool looking upstream

Great fly water – Fish from the left bank, do NOT wade out to the island and fish back towards the left bank – it is illegal!!  
Also, do NOT cross to the island and fish towards the right bank.





## Tail of Junction looking towards the Pot and Millers Bend



Millers  
Bed

Pot

Cross over to Island  
where you can – be careful gravel  
has shifted markedly leaving large holes  
If necessary cross at Sheperds



# Pipers and Shepherds





## Shepherds looking downstream towards the Flats

Shepherds offers excellent wading in low to medium water.





Flats looking upstream





## Tail of Flats looking downstream towards Upper Carse





## Upper Carse looking downstream from Hut towards Lower Carse and Neils





Lower Part of Beat





## Lower Carse and Neil's





# Tail of Lower Carse and Neil's

