



# Perth & District Anglers Association

*Scotland's Best Value Salmon Fishing*



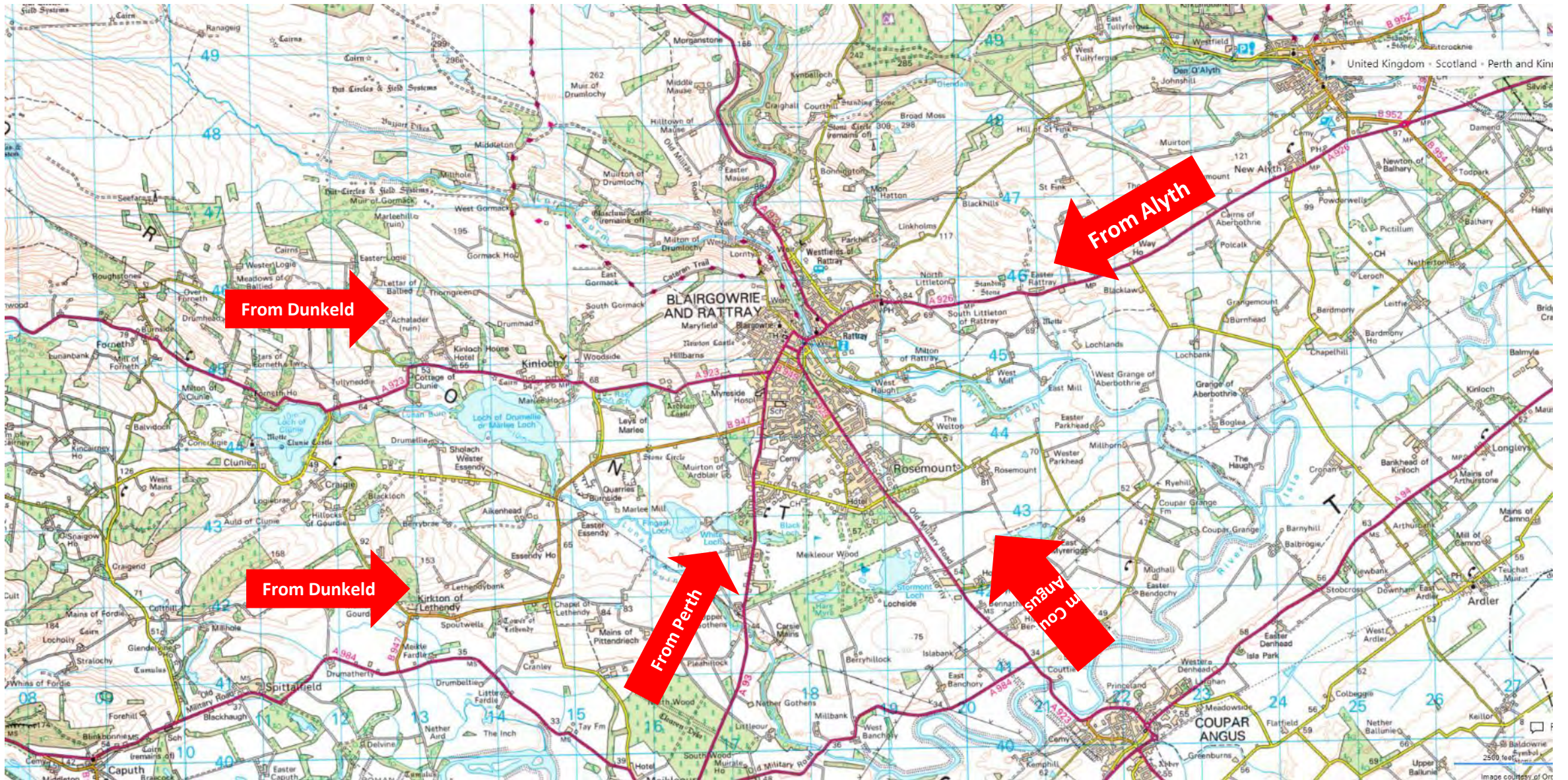
**ERICHT**





# ERICHT

## Getting There

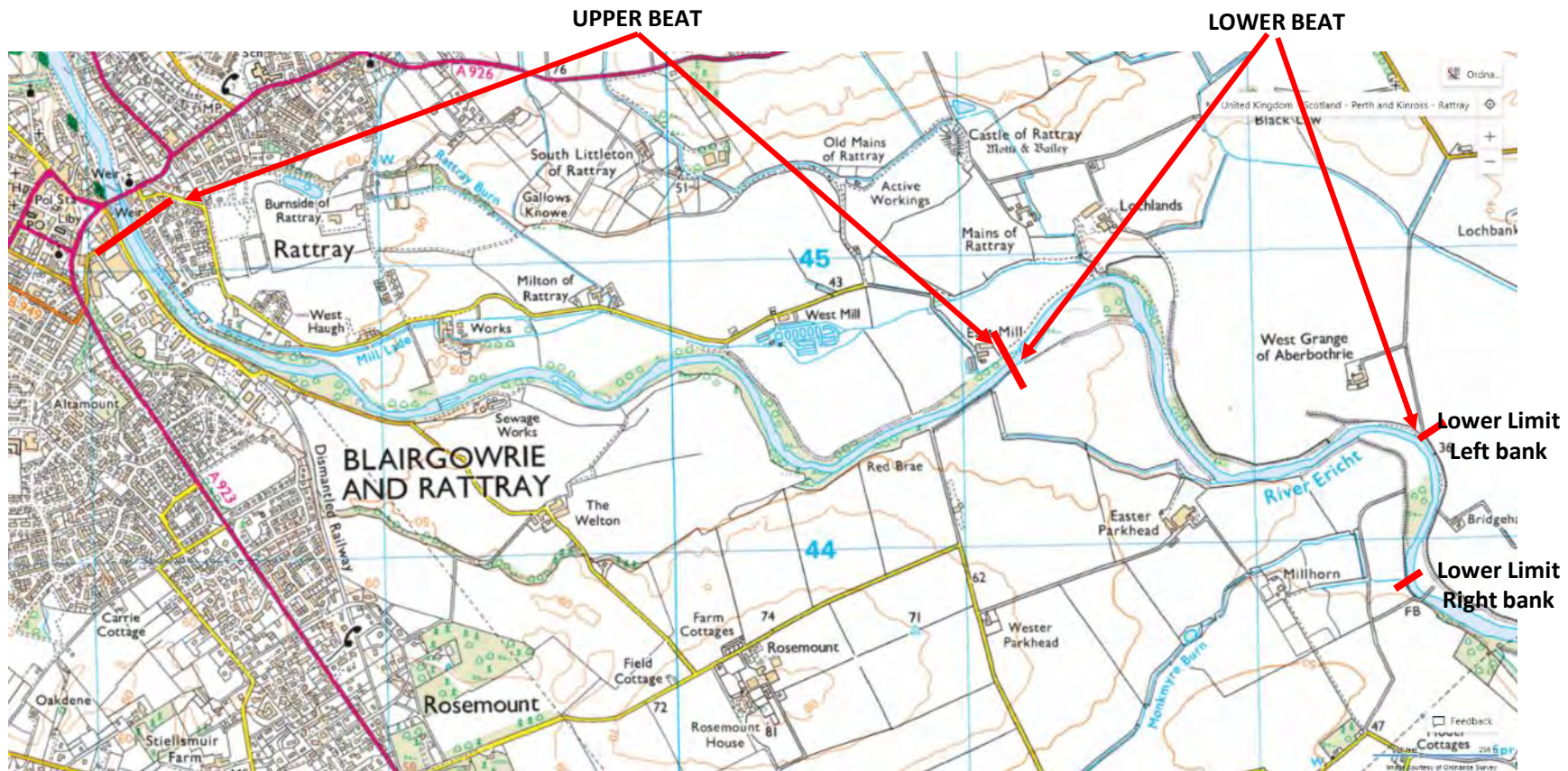


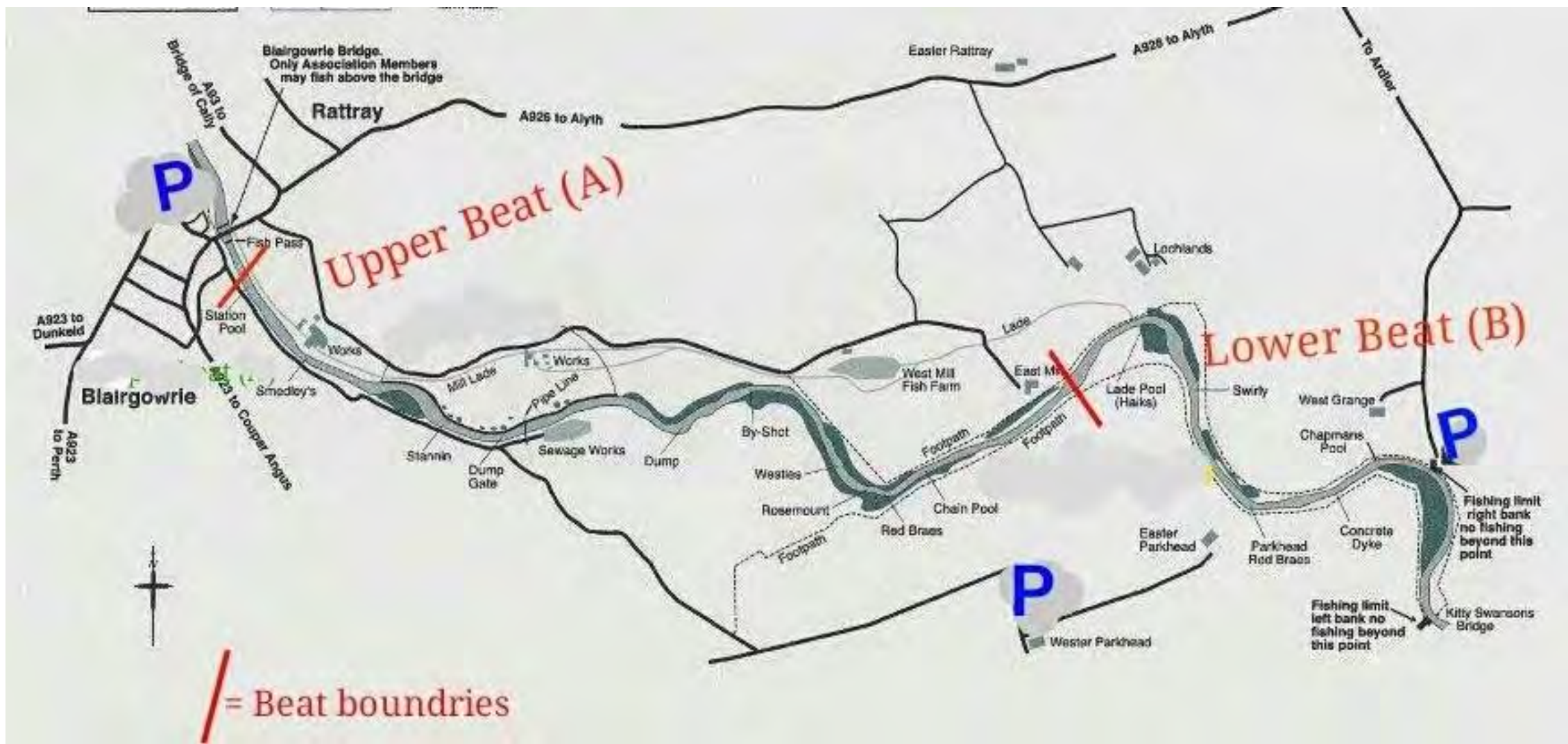


## Beat Description

The association has an agreement to fish for salmon, sea trout, brown trout and grayling on the Blairgowrie, Rattray and District Angling Association's water on the River Ericht, from the road bridge in Blairgowrie downstream to Kitty Swanson's footbridge. See map below for details of beat. (NB the water upstream of Blairgowrie Bridge is reserved for BRDAA members only.)

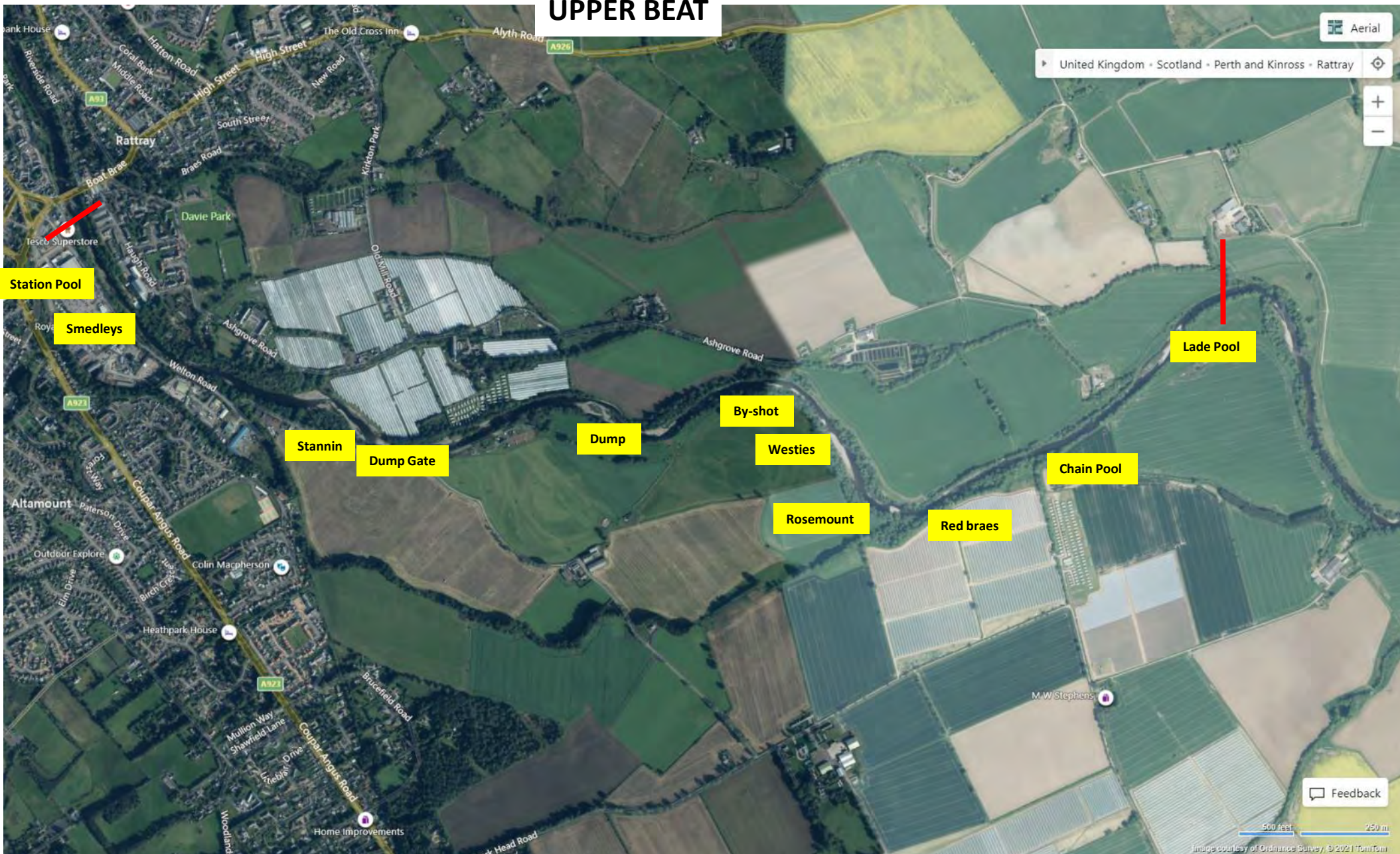
West Grange Fishings (owners of the Rattray Bank, ie north side)), and the BRDAA (Blairgowrie Bank) have instituted a bank share agreement. This effectively divides river into two beats (upper and lower) on a rota basis, with anglers allowed to fish both banks of their allotted beat (PDAA anglers fish the same rota as BRDAA). Details of the annual rota is on the website.







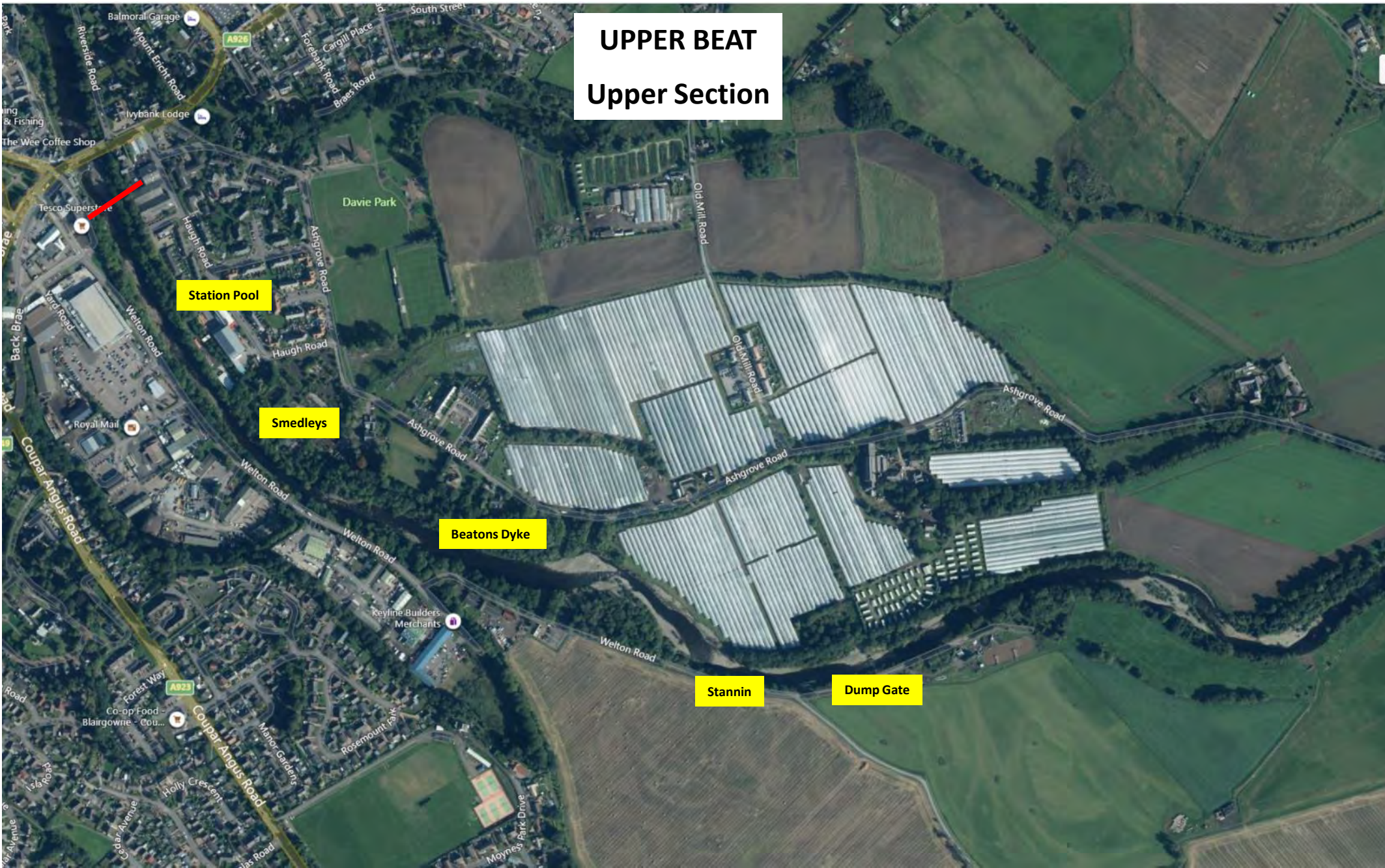
# UPPER BEAT





# UPPER BEAT

## Upper Section



Station Pool

Smedleys

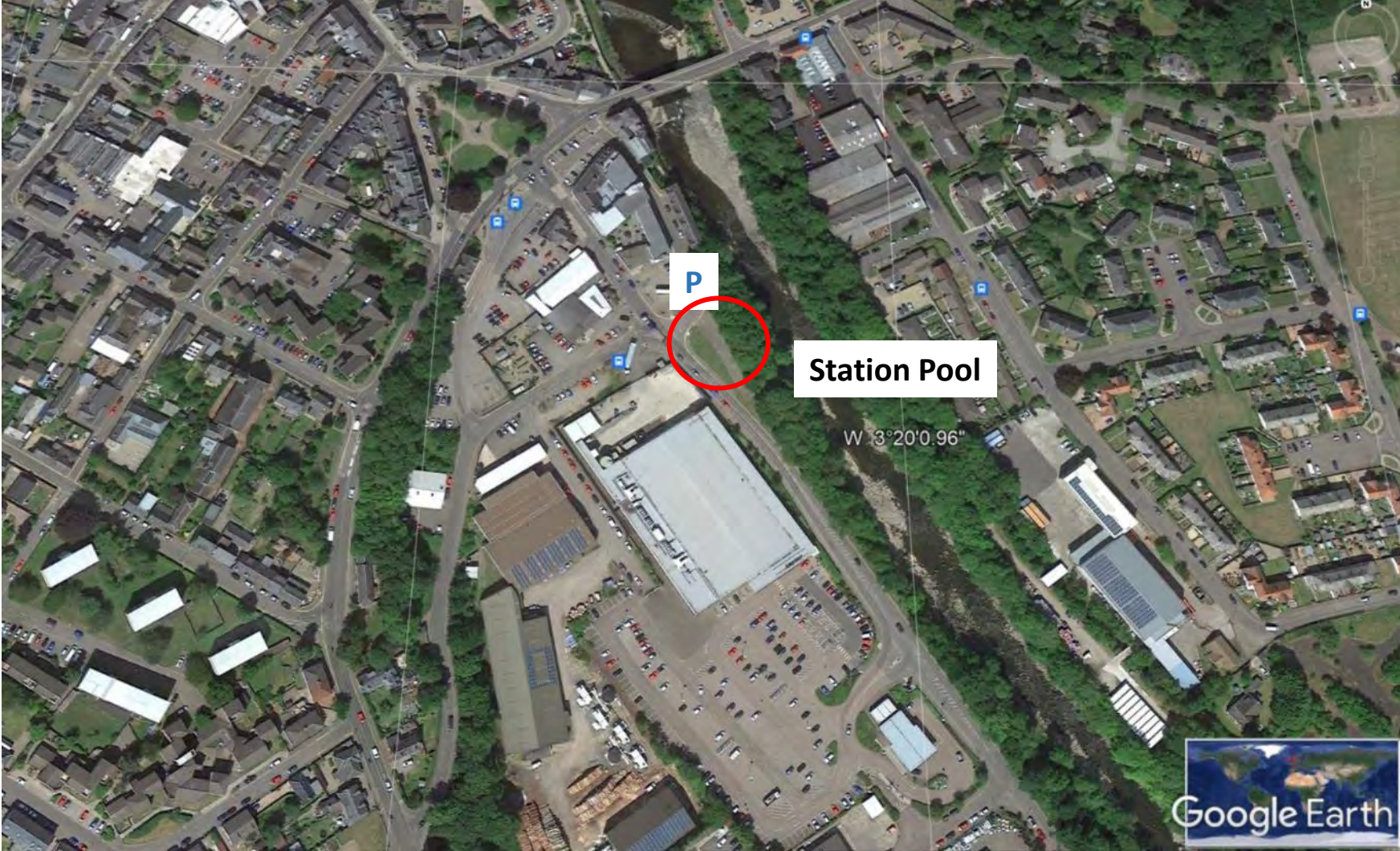
Beatons Dyke

Stannin

Dump Gate



**Station Pool and Smedleys**





## Station Pool Parking

Parking is on this old road opposite Tesco's





**Beat access is via this entrance at southern end of parking area.  
Slope to the river bank is quite steep – take care if frosty**





Looking upstream from the bottom of access slope.  
Start at top of beat and work down concentrating on far side and middle  
**Do not go further upstream than “Start here”**





**Station Pool looking downstream from the bottom of access slope.  
Work down towards Smedleys concentrating on far side and middle**





## Smedleys



This is a very productive pool but.....  
**It is definitely not for the fainthearted.** There is no access to the left bank so fishing is from gabion baskets when water levels allow .

It is strongly recommended to fish into Smedleys from the Station Pool, working down from the Station access point but only go as far as you feel safe  
You must have a net at Smedleys.

At low flows you may be able to walk on the gabions but some of these have collapsed





# Beatons Dyke Parking



Park on side of Welton Road and then follow Red arrows below to Pool access





## Pool access - Beatons Dyke





Looking Upstream from bottom of steps





Looking downstream from bottom of steps





## New Pool below Beatons Dyke



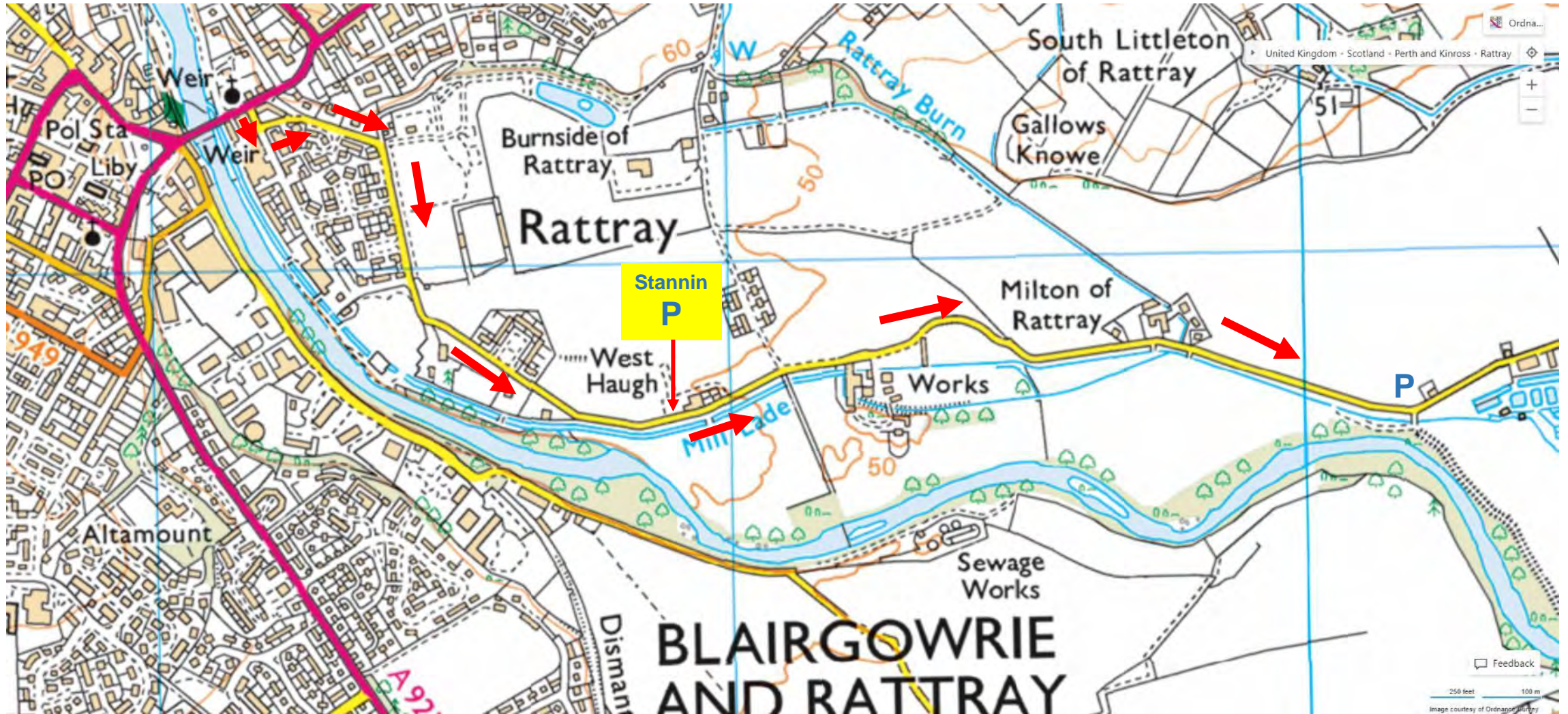


**Stannin Pool -Best Fished off the left bank**



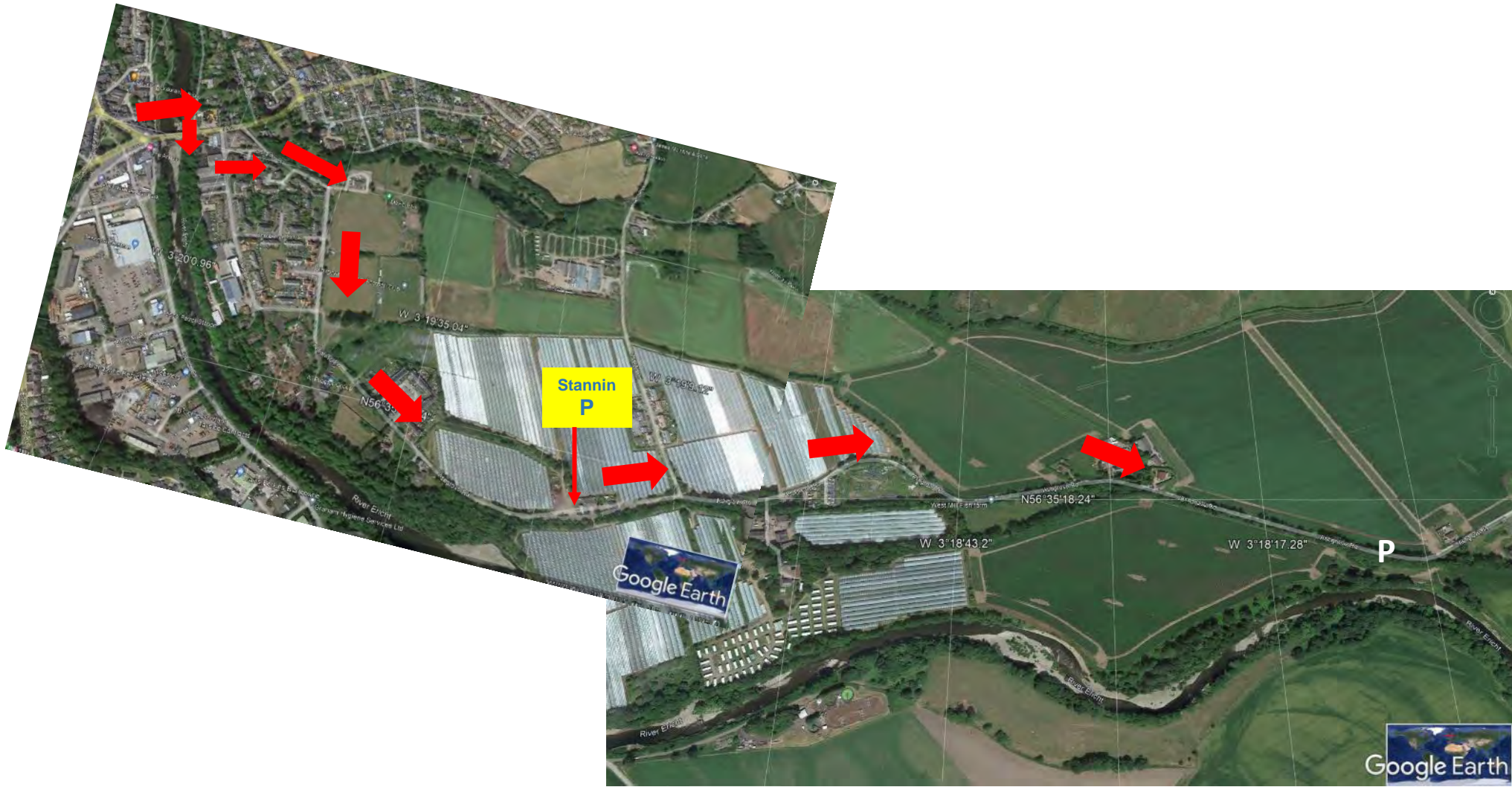


# Access to Left Bank





Route to left bank – Upper Beat





# Fishing Stannin Left Bank



Follow red route, cross lade and then track to river bank



Fish down to pipe over river, close to sewage works



Park here





# Parking

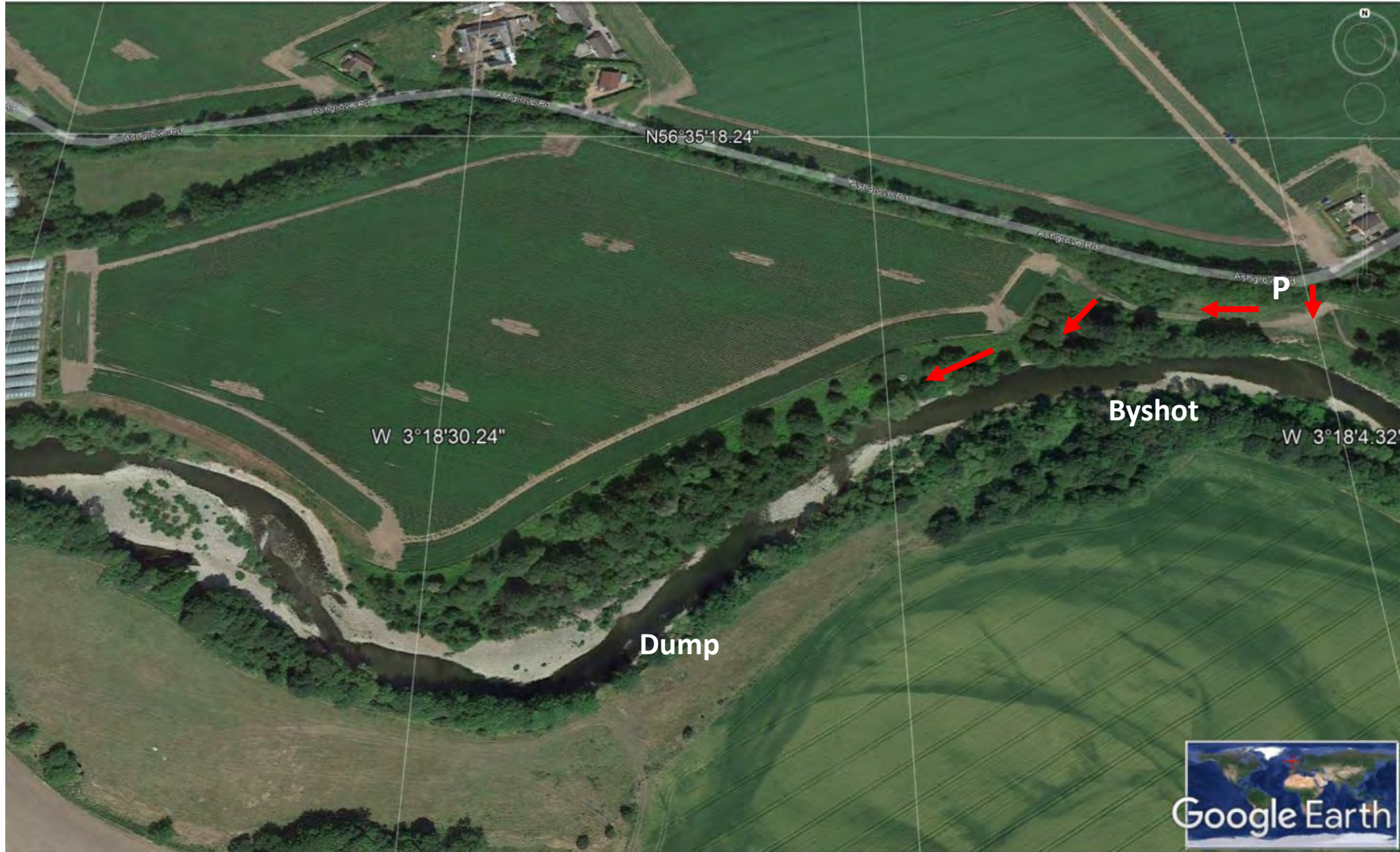








From the parking area, cross over the lade at concrete bridge, turn right and follow path to the Dump Pool and Byshot





**Willows (Dump) Pool looking upstream**





## Willows looking Downstream





Above the Willows Pool is another pool which is worth a cast





**Byshot below Willows pool**





## Turning left after crossing Lade





**Westies**





**Tail of Westies**





## Above Red Braes Corner





**Tail of Westies looking towards Red Braes Corner**





**Chain Pool looking upstream to Red Braes**



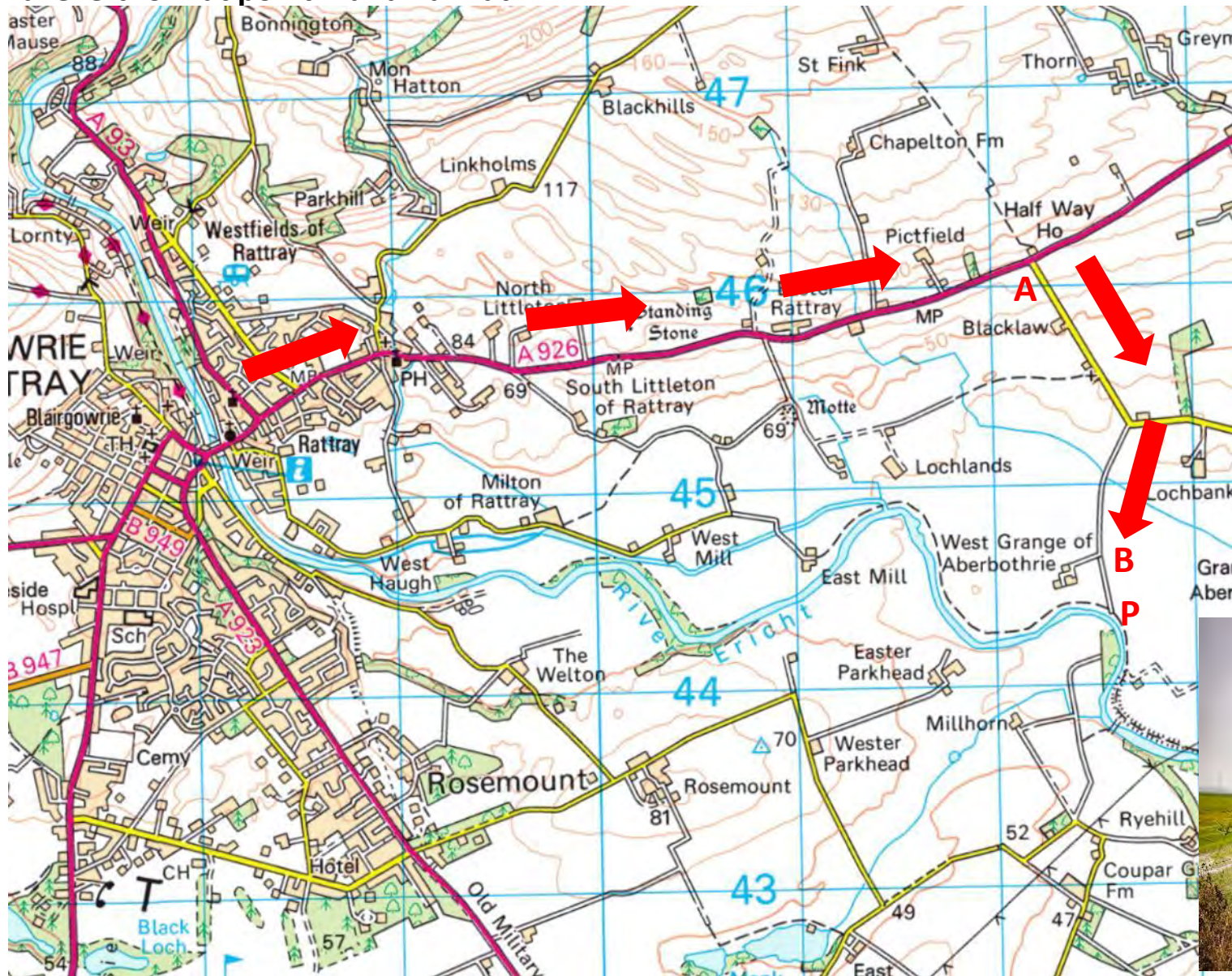


**Chain Pool looking downstream and to Upper Beat lower marker**





Getting to Lower Beat – leave Blairgowrie on A926, turn right at Point A, turn right before sharp left bend, Take left fork at point B and Park at P





# Route to left bank – Upper Beat, Lower section and Lower Beat





Parking – Left Bank, Upper Beat, Lower section/Lower Beat





## Parking

Gate to Kitty Swanson's bridge – **NB NO FISHING ON LEFT BANK BETWEEN HERE AND BRIDGE!**







Lade Pool

Swirly

Chapman's Pool

Concrete Dyke

Parkhead Red Braes

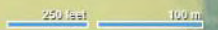
UPPER LIMIT

P

LOWER LIMIT  
LEFT BANK

LOWER LIMIT  
RIGHT BANK

Feedback







P

Walk to Kitty Swanson's Bridge  
No Fishing from this bank!!

Kitty Swanson's Bridge

Aerial

United Kingdom - Scotland - Perth and Kinross

+

-

bedroom accommodation in Aly...

Feedback

200 feet 50 m



## Kitty Swansons Bridge





Bottom of beat at Kitty Swansons bridge

**Cross over bridge and the bottom of the beat is at the burn above the bridge, access to Chapmans pool, Pipe pool and Snaggies upstream**





## Chapman's Pool





## Concrete Dyke





**Concrete Dyke – Marker Gauge – below red line NO Spinning!**





## Parkhead Red Braes – looking downstream to Flats Pool





## Pools upstream of Parkhead Red Braes

Corner Pool



Stone Pool





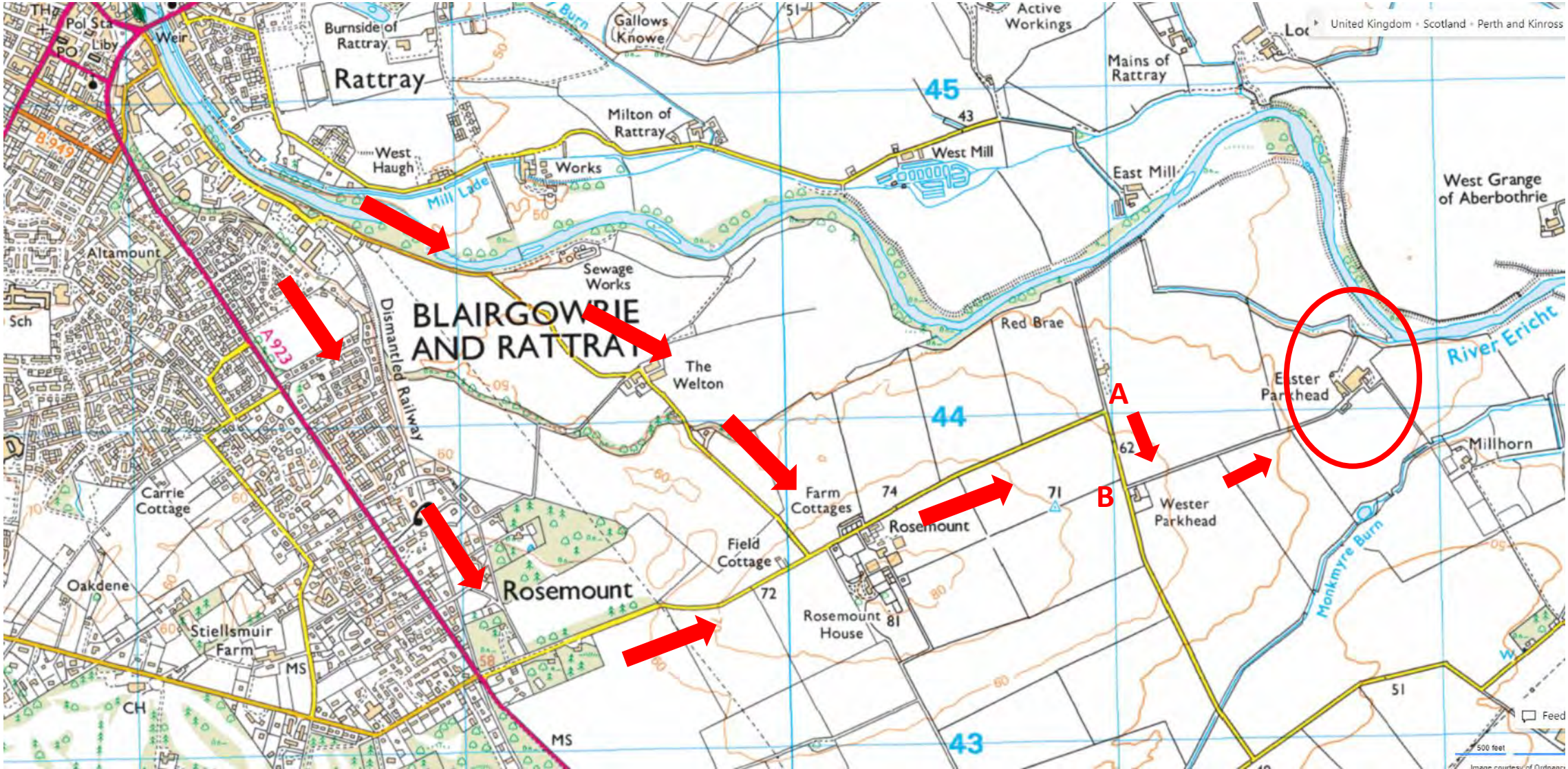
## Swirly





# Another way to get to the lower beat

## Drive to Easter Parkhead





# Another way to get to the lower beat Drive to Easter Parkhead





Turn left here and drive to farm





Park in here and walk to pedestrian access





Through here

You MUST dip your boots into the disinfectant bath and walk through farm to end





Walk to end and then turn half right





You are aiming to walk down this track – if way is blocked (like photo) go round back of skip





Follow track to river – Go left or right

